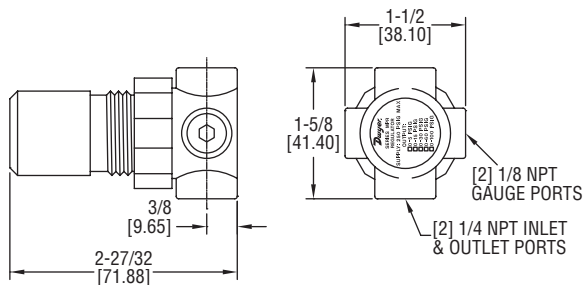


MINIATURE PRESSURE REGULATOR

Air or Water Regulator, Compact and Lightweight, Low Cost



The **SERIES MPR** Miniature Pressure Regulators are compact units that provide low cost, high performance pressure regulation of compressed air or air/water. The low torque, non-rising adjustment knob with locking capability provides easy and precise adjustment. Models for use with air are self relieving. Models for air/water are non-relieving.

MODEL CHART

Air Model	Air/Water Model	Range
MPR1-0	MPR2-0	0 to 5 psi
MPR1-1	MPR2-1	0 to 15 psi
MPR1-2	MPR2-2	0 to 30 psi
MPR1-3	MPR2-3	0 to 60 psi
MPR1-4	MPR2-4	0 to 100 psi

ACCESSORIES

Model	Description
MPR-B	Mounting bracket
MPR-N	Panel mounting nut

SPECIFICATIONS

Service: Compressed air or water.

Wetted Materials: Body: Zinc; Bonnet: Acetal; Diaphragm/seals: Nitrile; Internals: Aluminum, brass, acetal, steel, music wire (MPR2 is plated with electroless nickel for water use).

Maximum Supply Pressure: 250 psig (17.2 bar).

Temperature Limits: 0 to 150°F (-18 to 60°C).

Flow Capacity: 24 SCFM (48 m³/hr) at 100 psig (6.9 bar) supply, 60 psig (4.1 bar) output.

Process Connection: Inlet and outlet: Two 1/4" female NPT; Two 1/8" female NPT gauge ports.

Weight: 4 oz (113 g).