

ASCO™ Pulse Valves

Threaded body or compression fitting, 3/4 to 1 1/2 with FPM diaphragm

**2/2
Series
353**

Features

- The diaphragm pulse valves are especially designed for dust collector service applications, combining high flow, long life and extremely fast opening and closing to produce reliable and economical operation
- The high flow, angle type bodies in combination with the special main diaphragm assemblies give the unique operating features required for dust collector service applications
- Integral compression fittings for fast, easy, secure installation
- Remote operated valves can be supplied according to ATEX Directive 2014/34/EU for non-electrical equipment
- The integral operators are provided with epoxy moulded F-class coils. Various optional waterproof and explosionproof solenoids for use in potentially explosive atmospheres (gas & dust) according to Directive ATEX 2014/34/EU can be mounted on the same basic valve
- The valves satisfy all relevant EC directives



General

Ambient temperature range -20 to +85°C

Fluids (*)	Temperature Range (TS)	Diaphragm
air	Up to +120 °C	FPM

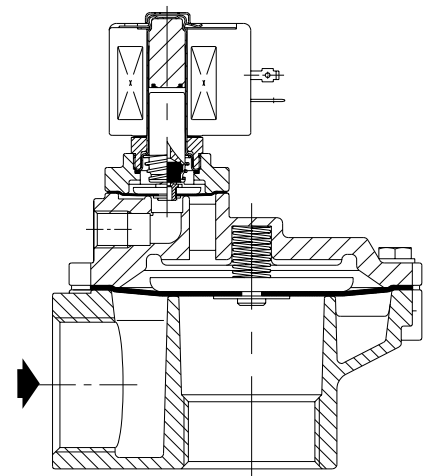
Materials in Contact with Fluid

(*) Ensure that the compatibility of the fluids in contact with the materials is verified

Body	Aluminium
Spring	Stainless steel
Diaphragm	FPM (fluoroelastomer)

Pilot Solenoid Valves (2/2 NC Function)

Main Pulse Valve Catalog Number	Remote Pilot Connection	Recommended Executions		
		Orifice Size (mm)	Manifold Pilot Valves in a Box (IP 65)	Single Pilot Valves (IP20)
G353A041	G 1/8	3.6	pilot box series 110 2 to 12 pilots 1/8	series 257
G353A042				
G353A046				
G353-055				
G353-056				
G353A063				
G353A045	G 1/4	5,6	pilot box series C20 4 to 6 valves 1/4	series 262
G353-066				



IN
Figure shows catalogue number SCXG353A047V.20903

Specifications Remote Operated Valves

Pipe Size	Remote Pilot Connection	Orifice Size	Flow Coefficient		Operating Pressure Differential (bar)		Catalog Number
					Min.	Max (PS)	
	Ø B	(mm)	(m³/h)	(l/min)		Air	Aluminium ⁽¹⁾
G - threaded pipe connection - Single stage							
3/4	G 1/8	24	14	233	0,35	8,5	XG353A041V.20903 (GD)
1	G 1/8	27	17	283	0,35	8,5	XG353A042V.20903 (GD)
1 1/2	G 1/4	50	46	768	0,35	8,5	XG353A045V.20903 (GD) ⁽²⁾
G - threaded pipe connection - Dual stage							
1 1/2	G 1/8	50	46	768	0,35	8,5	XG353A046V.20903 (GD) ⁽²⁾
Ø - Compression fitting pipe connection - Single stage							
3/4	G 1/8	24	14	233	0,35	8,5	XG353-055V.20903 (GD)
1	G 1/8	27	17	283	0,35	8,5	XG353-056V.20903 (GD)
1 1/2	G 1/4	50	43	717	0,35	8,5	XG353-066V.20903 (GD) ⁽²⁾
G - Compression fitting pipe connection - Dual stage							
1 1/2	G 1/8	50	43	717	0,35	8,5	XG353A063V.20903 (GD) ⁽²⁾

Specifications Integral Pilot Valves

Pipe Size	Orifice Size	Flow Coefficient		Operating Pressure Differential (bar)		Prefix Optional Solenoids					Catalog Number
	(mm)	(m³/h)	(l/min)	Min.	Max (PS)	-		ATEX			Aluminium
					air	SC	WP	SG	EM(T)	NF	
G - threaded pipe connection - Single stage											
3/4	24	14	233	0,35	8,5	•	•	•	•	•	XG353A043V.20903
1	27	17	283	0,35	8,5	•	•	•	•	•	XG353A044V.20903
G - threaded pipe connection - Dual stage											
1 1/2	50	44	733	0,35	8,5	•	•	•	•	•	XG353A047V.20903 ⁽²⁾
Ø - Compression fitting pipe connection - Single stage											
3/4	24	14	233	0,35	8,5	•	•	•	•	•	XG353-052V.20903
1	27	17	283	0,35	8,5	•	•	•	•	•	XG353-053V.20903
G - Compression fitting pipe connection - Dual stage											
1 1/2	50	44	733	0,35	8,5	•	•	•	•	•	XG353A065V.20903 ⁽²⁾

(1) Suffix GD for ATEX II2G/D

(2) Contains spring above the main diaphragm

(3) See Installation part for more info

Options

- Sequential controller for pilot solenoid valves to activate remote operated valves
- Pilot boxes containing 2 to 12 pilot solenoid valves to activate remote operated valves
- Pilot solenoid valves can be equipped with explosionproof solenoids for hazardous locations according to "ATEX" and national standards
- Waterproof enclosure with embedded screw terminal coil according to protection class IP67, CEE 10 for direct operated valves
- Explosionproof solenoids for hazardous locations according to "ATEX" and national standards for direct operated valves
- IECEx certification for direct operated valves
- Plug with visual indication and/or peak voltage suppression for direct operated valves
- Electronic timer

Installation

- The valves can be mounted in any position without affecting operation
- Threaded pipe connection is G (ISO 228/1) or compression fitting
- In remote operated valves, when connecting piping or tubing to the G1/8 connection in the valve bonnet, the remote ASCO pilot valve should be mounted as close as possible to the main pulse valve. Connection tubing lengths of 3 meter or less have little effect on the pulse response. Installations with over 3 meter of tubing must be tested under actual operating conditions. Tubing with Ø 6 mm O.D. is recommended for all installations
- For compression fitting types tightness is achieved by the compressed gasket on the blow tube
- Other pipe threads are available on request
- Installation/maintenance instructions are included with each valve
- Spare parts kits and replacement coils are available
- Diaphragm temperature below -5°C might lead to longer opening and closing time

Dimensions: mm , Weight: kg

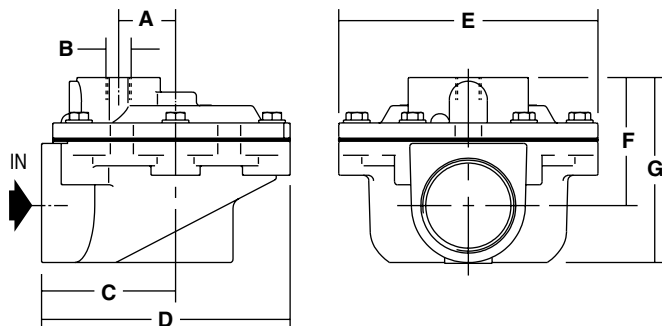


Fig. 1: Threaded pipe connection -remote operated

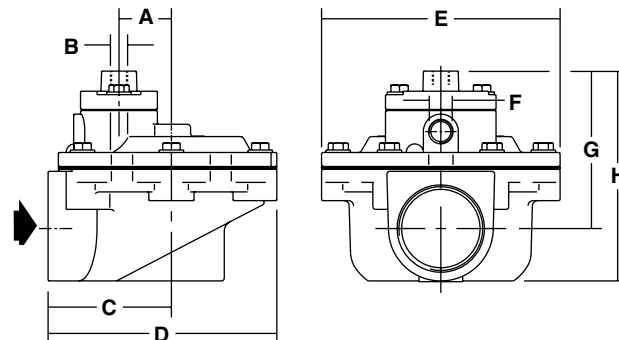


Fig. 2: Threaded pipe connection -remote operated

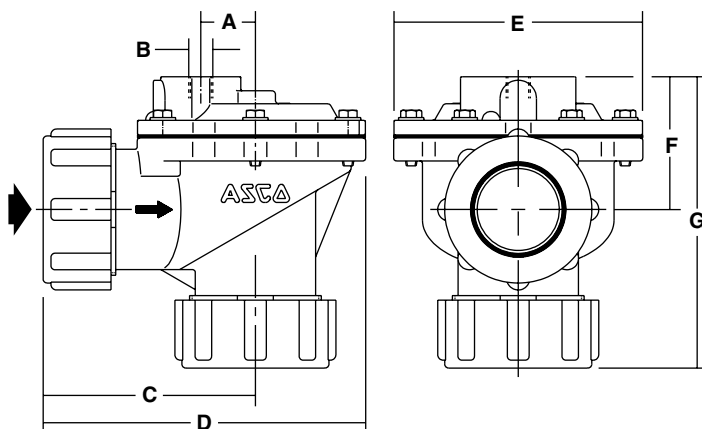


Fig. 3: Compression fitting pipe connection -remote operated

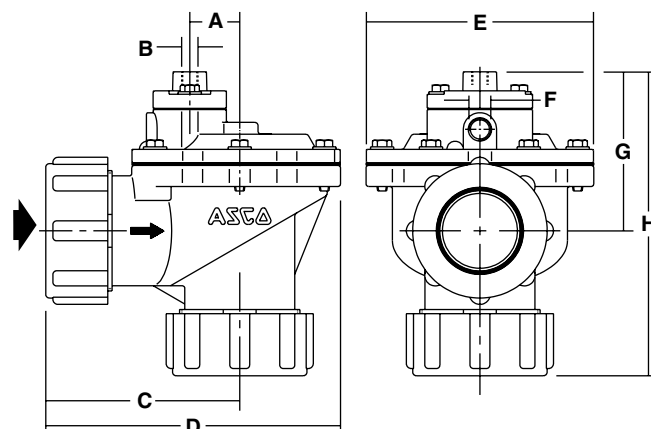


Fig. 4: Compression fitting pipe connection -remote operated

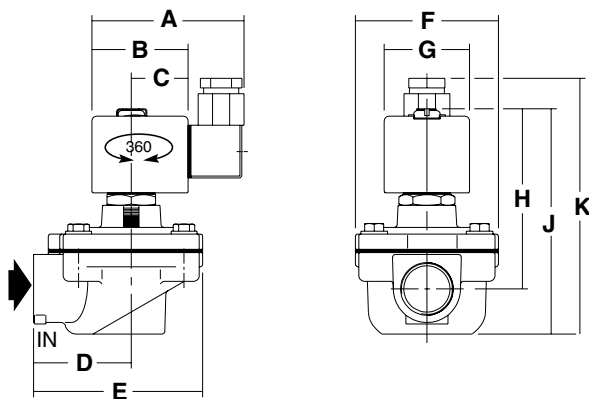


Fig. 5: Threaded pipe connection -integral pilot

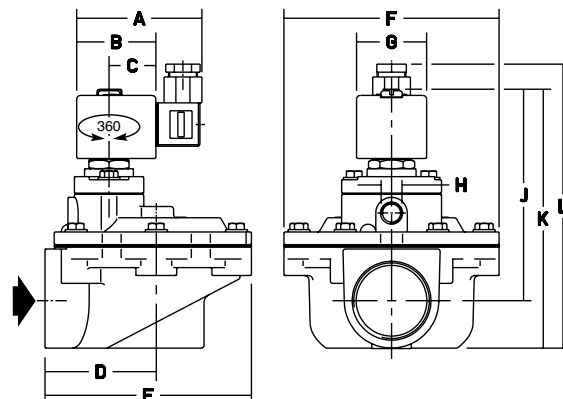


Fig. 6: Threaded pipe connection -integral pilot

Dimensions: mm , Weight: kg

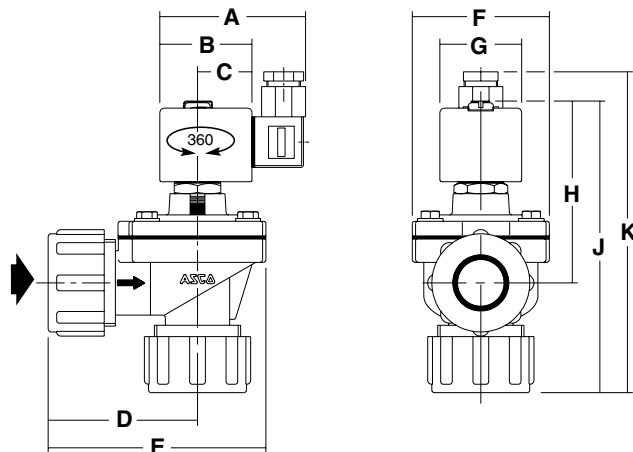


Fig. 7: Compression fitting pipe connection -integral pilot

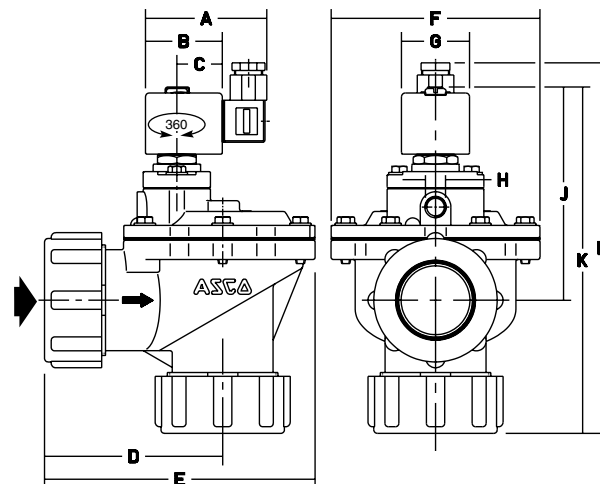


Fig. 8: Compression fitting pipe connection -integral pilot

Remote Operated Valves

Catalogue Number	A	B	C	D	E	F	G	H	Weight	Construction Type
XG353A041V.20903 (GD)	-	G 1/8	51	89	75	41	65	-	0,45	Fig. 1
XG353A042V.20903 (GD)	-	G 1/8	51	89	75	41	64	-	0,4	Fig. 1
XG353A045V.20903 (GD)	-	G 1/4	71	130	136	71	98	-	1	Fig. 1
XG353A046V.20903 (GD)	30	G 1/8	71	130	136	G 3/8"	90	120	1,1	Fig. 2
XG353-055V.20903 (GD)	-	G 1/8	88	125	75	47	109	-	0,58	Fig. 3
XG353-056V.20903 (GD)	-	G 1/8	88	124	75	47	129	-	0,61	Fig. 3
XG353-066V.20903 (GD)	-	G 1/4	117	177	136	73	161	-	1,33	Fig. 3
XG353A063V.20903 (GD)	30	G 1/8	87	177	136	G 3/8"	96	183	1,43	Fig. 4

Direct Operated Valves

Catalogue Number	A	B	C	D	E	F	G	H	J	K	L	Weight	Construction Type
SCXG353A043V.20903	75	45	27	51	89	75	39	92	113	130	-	0,7	Fig. 5
SCXG353A044V.20903	75	45	27	51	89	75	39	92	113	130	-	0,65	Fig. 5
SCXG353A047V.20903	80	50	30	71	130	136	45	G 3/8"	131	161	178	1,40	Fig. 6
SCXG353-052V.20903	75	45	27	81	125	75	39	92	175	195	-	0,85	Fig. 7
SCXG353-053V.20903	75	45	27	81	125	75	39	92	175	195	-	0,9	Fig. 7
SCXG353A065V.20903	80	50	30	117	177	136	45	G 3/8"	131	225	242	1,75	Fig. 8

Spare Part Kits

Catalog Number	Spare Parts Kit No.
	~/=
XG353A041V.20903 (GD)	C326749V
XG353A042V.20903 (GD)	
XG353-055V.20903 (GD)	
XG353-056V.20903 (GD)	
XG353A045V.20903 (GD)	C326725V
XG353-066V.20903 (GD)	
XG353A046V.20903 (GD)	C326726V
XG353A063V.20903 (GD)	

Catalog Number	Spare Parts Kit No.
	~/=
SCXG353A043V.20903	C326750V
SGXG353A043V.20903	
SCXG353A044V.20903	
SGXG353A044V.20903	
SCXG353-052V.20903	C326727V
SGXG353-052V.20903	
SCXG353-053V.20903	C326727V
SGXG353-053V.20903	
SCXG353A047V.20903	C326727V
SGXG353A047V.20903	
SCXG353A065V.20903	C326727V
SGXG353A065V.20903	