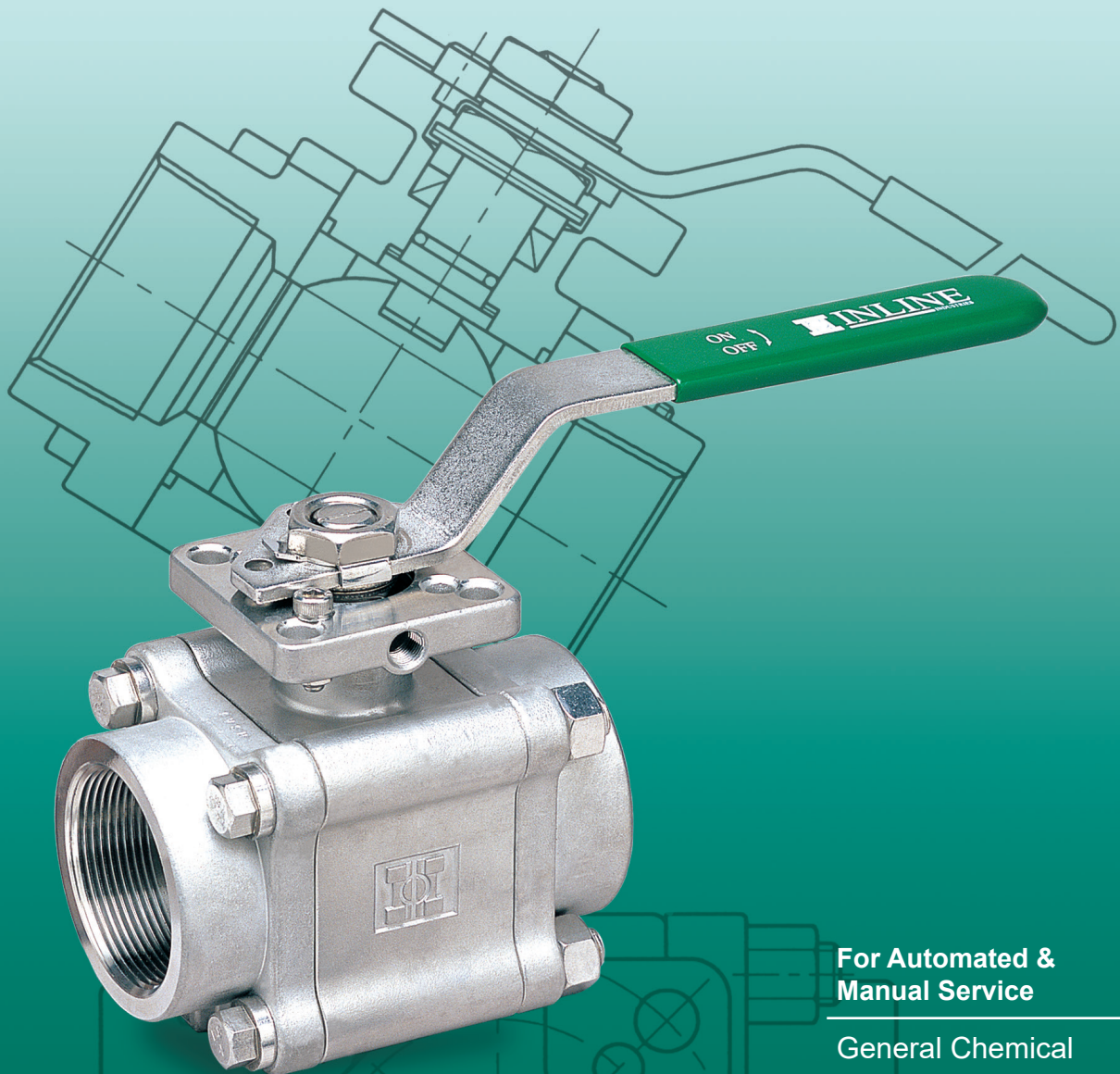


334F/S Ball Valve

3-Piece Full and Standard Port
ISO 5211 Direct Mount Pad



For Automated &
Manual Service

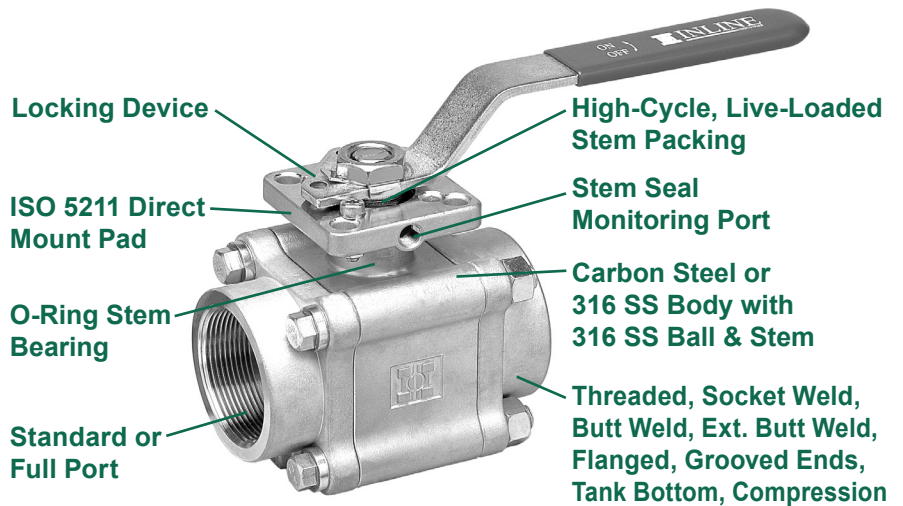
General Chemical

Industrial

Corrosion Resistant
Applications

The 334F/S Series Ball Valve

Designed to meet demanding flow and application requirements, the 334 series ball valve is available in a variety of seat and seal combinations, incorporating several of our innovative design features for improved process performance. The full port configuration improves flow rates, while minimizing pressure drop through the valve. The standard port configuration reduces costs where flow rates are not critical. The dual pattern ISO 5211 mount pad facilitates direct mounting of pneumatic and electric actuators. With an extensive variety of configurations, the 334 series can be optimized to meet a wide range of application requirements.

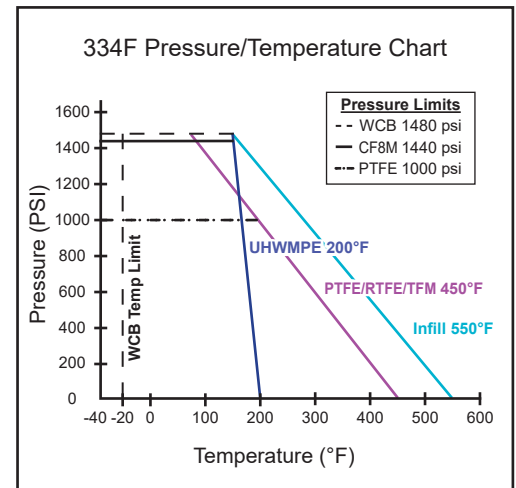


Standard Features and Benefits

- Dual Pattern ISO 5211 Direct Mount Pad**
 No bracket or drive coupling needed for automation
 Dual pattern pad fits a wide range of actuator sizes
 Eliminates exposed moving parts for safer work environment
 Prevents side-loading and improves actuator positioning
- High-Cycle, Live-Loaded Stem Packing**
 Energized spring stem seals self-adjust to compensate for wear and pressure/temperature changes, thereby ensuring a leak-tight seal and extending service life
- O-Ring Stem Bearing**
 Maintains stem alignment while reducing packing side-loading and wear, and enhancing stem seal performance
- Blow-Out-Proof Stem**
 Stem is bottom-loaded to prevent removal when valve is in service
- 3-Piece Swing-In-Place Construction**
 Swing-out construction allows for easy repair in line
- Lockout Capability**
 Enables plant personnel to secure valve in open or closed position when manually operated
- Heavy Duty Construction**
- Investment Cast**
 High quality investment castings improve dimensional control and reduce porosity
- Anti-Static Stem**
- Standard Seats & Seals Suitable for 150 PSI Saturated Steam**
- Castings Meet NACE MR0175/ISO 15156**

Options

- End Connections Available in NPT, Socket Weld, Butt Weld, Flanged or Grooved in 316 SS or Carbon Steel**
- High Temperature Configuration Capable of Up to 250 psi Saturated Steam**
- CE Marking (Valves 1" or Smaller)**
- Material Test Reports Available Upon Request**

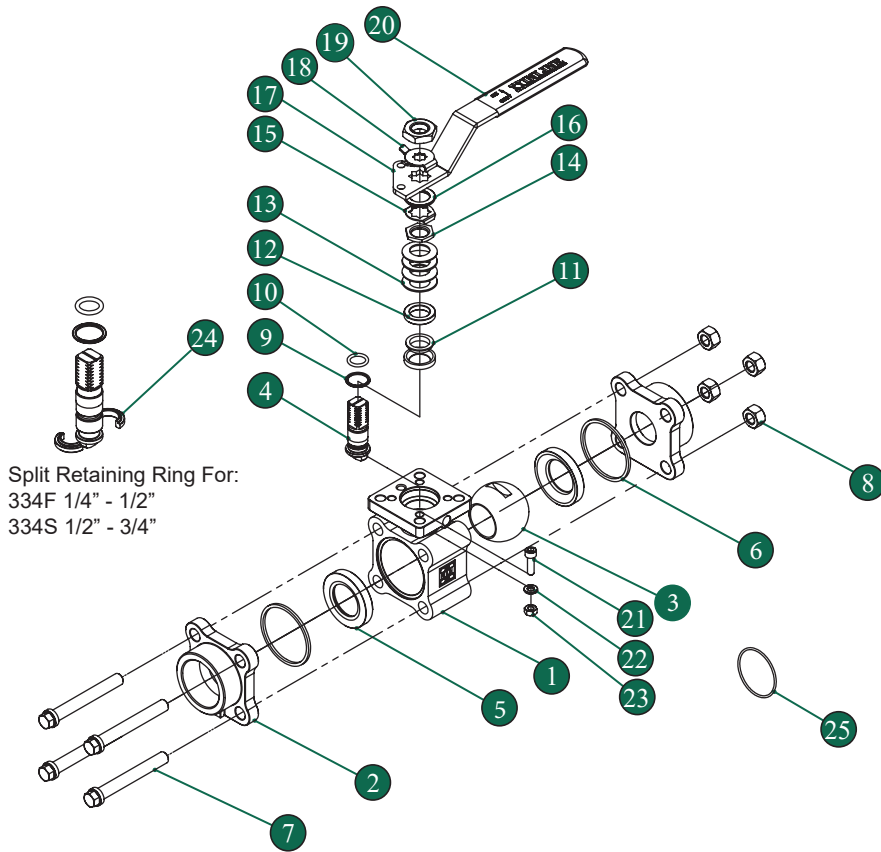


Operating Conditions

- Temperature Range:**
 -40°F ~ 550°F (Seat Dependent)
- Maximum Pressure:**
 ASME 600: 1440 PSI (CF8M)
 1480 PSI (WCB)

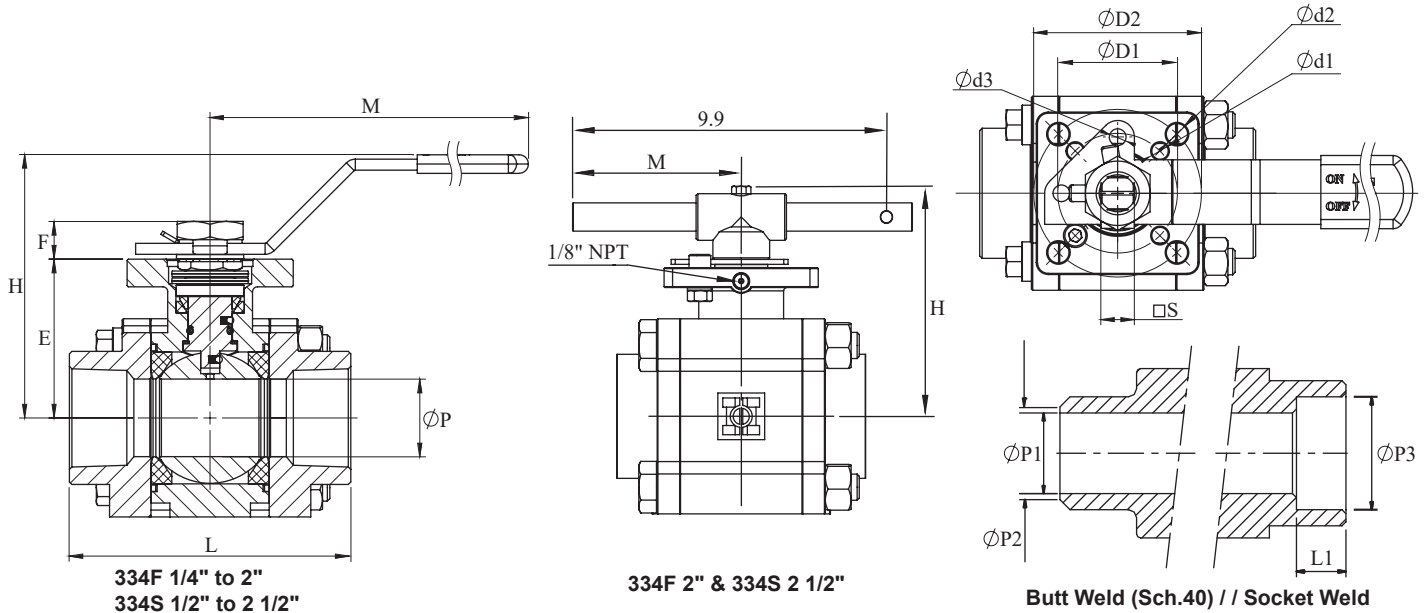
Specifications

- All valves shell and seat tested to ANSI/ASME B16.34 and API 598
- All materials comply with applicable ASTM material specifications
- End connections:**
 All to ASME B16.34
 NPT to ASME B1.20.1
 Socket Weld to ASME B16.11
 Butt Weld to ASME B16.25
 Flanges to ASME B16.5



Valve Components			
No.	Part Name	Material	Qty
1	Body	CF8M	1
2	End Cap	CF8M	2
3	Ball	316 SS	1
4	Stem	316 SS	1
5	Seat	RTFE (15% C.F.)	2
6	Body Seal	PTFE	2
7	Body Bolt	304 SS	4
8	Body Nut	304 SS	4
9	Thrust Washer	PEEK	1
10	Stem O-Ring	Viton 75	1
11	Stem Packing Set	PTFE	1
12	Packing Gland	304 SS	1
13	Belleville Washer	301 SS	4
14	Gland Nut	304 SS	1
15	Gland Nut Lock Washer	304 SS	1
16	Stem Spacer	304 SS	1
17	Handle	304 SS	1
18	Handle Nut Lock Washer	304 SS	1
19	Handle Nut	304 SS	1
20	Handle Cover	Vinyl	1
21	Stop Pin	304 SS	1
22	Split Lock Washer	304 SS	1
23	Stop Pin Nut	304 SS	1
24	Split Retaining Ring	316 SS	2
25	Seat Support O-Ring*	Viton 75	2

*Seat Support Ring Required for Delrin Seats Only



Dimensions (Inches)																				
334F	334S	L	L1	P	P1	P2	P3	M	H	E	F	D1	D2	d1	d2	d3	S	ISO 5211* Pattern	Cv 334F/344S	Weight (lbs) ¹
1/4"	-	2.57	0.44	0.44	0.36	0.49	0.56	5.4	3.0	1.80	0.38	1.42	1.97	0.22	0.26	0.31	0.35	F03/F05	7.5	1.7
3/8"	1/2"	2.57	0.44	0.44	0.49	0.62	0.69	5.4	3.0	1.80	0.38	1.42	1.97	0.22	0.26	0.31	0.35	F03/F05	8.4 / 8.5	1.7
1/2"	3/4"	2.80	0.44	0.56	0.62	0.75	0.85	5.4	3.1	1.89	0.38	1.42	1.97	0.22	0.26	0.31	0.35	F03/F05	14.1 / 13.0	2.2
3/4"	1"	3.69	0.56	0.81	0.82	0.95	1.07	6.4	3.2	1.99	0.43	1.65	1.97	0.22	0.26	0.31	0.43	F04/F05	27.0 / 32.1	3.7
1"	1 1/4"	4.19	0.72	1.00	1.05	1.17	1.33	6.4	3.4	2.19	0.44	1.65	1.97	0.22	0.26	0.31	0.43	F04/F05	47.0 / 45.2	5.2
1 1/4"	1 1/2"	4.54	0.72	1.25	1.38	1.51	1.67	8.0	4.2	2.56	0.61	1.97	2.76	0.26	0.35	0.31	0.55	F05/F07	62.6 / 73.8	8.5
1 1/2"	2"	4.98	0.72	1.50	1.61	1.74	1.91	8.0	4.5	2.83	0.61	1.97	2.76	0.26	0.35	0.31	0.55	F05/F07	110 / 110	10.9
2"	2 1/2"	5.87	0.84	2.00	2.07	2.19	2.41	5.5	5.4	3.50	0.77	2.76	4.02	0.35	0.43	0.39	0.67	F07/F10	211 / 203	23.1

*Direct mount may require stem adapter bushings
¹Weights based on NPT Ends

Cv value represents flow data to ISA 75.01.01 - 2007



Automation Systems



Direct Mount Products

334F Ordering Information

Example: 2" 3-Piece Full Port Ball Valve with ISO 5211 Direct Mount Pad, Lever Handle and Locking Device, 316 SS Body and Trim, RTFE (15% C.F.) Seats, PTFE Seals, NPT Ends

334F	D	6	6	6	6	C	T	TT	2	S
Valve Series	Valve Size	Body Material	End Material	Ball Material	Stem Material	Seat	Seal	End Connection	Port	Ball Configuration
334F - Full Port	2" 1/4"	6 - A351 Gr.	6 - A351 Gr.	6 - 316 SS	6 - 316 SS	C - RTFE (15% C.F.)	T - PTFE	T - NPT	2 - 2 Way	S - Straight Port
334S - Standard Port	3" 3/8"	CF8M (316)	CF8M (316)			F - 50% 316 SS Filled PTFE	F - 50% 316 SS Filled PTFE	S - Socket Weld		
334C - Compression	5" 1/2"	2 - A216 Gr. WCB (CS)	2 - A216 Gr. WCB (CS)			J - Cavity Filled TFM	M - TFM	4 - Butt Weld Sch. 40**		
	7" 3/4"		3 - A351 Gr. CF3M (316L)			M - TFM	Q - S Gasket TFE (PTFE Coated 316 SS)	1 - Butt Weld Sch. 10**		
	A 1"					R - RTFE (15% G.F.)	U - UHMWPE	5 - Butt Weld Sch. 5**		
	B 1 1/4"					S - Infill (Carbon, Carbon Fiber, Ekonol Filled Modified PTFE)	V - Viton	6 - Ext. BW Sch. 10**		
	C 1 1/2"					T - PTFE		7 - Ext. BW Sch. 40**		
	D 2"					U - UHMWPE		A - ANSI 150# Flanged		
	E* 2 1/2"							B - ANSI 300# Flanged		
								G - Grooved		
								K - Tank Bottom**		
								P - Compression		

[†]Full Port Only
*Standard Port Only

**316L - Standard Material
Due to continuous product development, information may change without notice



INLINE INDUSTRIES, INC.

9056 Garvey Avenue
Rosemead, CA 91770

Tel: (800) 568-8998
(626) 813-6188

Fax: (626) 813-6186

www.ballvalve.com
info@ballvalve.com

Distributed by: