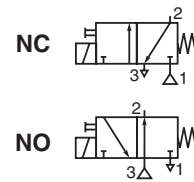




MICRO SOLENOID VALVES

direct operated
pad-mounting body
for subbase M3/M5



3/2
Series
188
Type
Micro 10

GENERAL

Fluid	Air or inert gas, non-lubricated, filtered at 25 µm
Operating pressure	7 bar max.
Ambient temperature	+5°C to +50°C
Flow (Qv at 6 bar)	See «SPECIFICATIONS»
Manual operator	Impulse-type (without manual operator on request)
Switching time	10 ms (<10 ms on request)

CONSTRUCTION

Body	PA (polyamide) MXD6
Internal parts	Stainless steel, nickel-plated steel, synthetic material, aluminium
Seals	NBR (nitrile), FPM (fluoroelastomer) on request



ELECTRICAL CHARACTERISTICS

voltage (other voltages on request)	consumption	insulation class	degree of protection	electrical connection
24V = 12V = 5V =	1W - 1,3W	F	IP 40	connector with two 0.5 mm ² lead wires + built-in LED and electrical protection or cable ends, 0,5 m long
+10%, -15%				

The solenoid valves are designed for continuous operation within the maximum ambient temperature limits.

SPECIFICATIONS

symbol	orifice size (mm)		flow		operating pressure (bar)		consumption (W)	type of electrical connection (*)	catalogue number
	1 → 2	2 → 3	at 6 bar l/min (ANR)	coefficient Kv	min.	max.			
NC 	0,5	0,7	8	0,12	0	8	1,3	1	18801003
								2	18801076
								3	18801074
								4	18801078
								5	18801072
	0,8	0,8	10	0,15	0	4	1,3	1	18801081
								2	18801082
								3	18801083
								4	18801084
1,0	1,0	12	0,18	0	2,5	1,3	5	18801085	
							1	18801086	
							2	18801087	
							3	18801088	
							4	18801089	
NO 	0,5	0,5	8	0,12	0	6	1,3	1	18801063
								2	18801077
								3	18801075
								4	18801079
	0,8	0,8	10	0,15	0	3	1,3	5	18801073
								1	18801091
								2	18801092
								3	18801093
	1,0	1,0	12	0,18	0	1,5	1,3	4	18801094
								5	18801095
								1	18801096
								2	18801097
1,0	1,0	12	0,18	0	1,5	1,3	3	18801098	
							4	18801099	
							5	18801100	

(*) Type 1,2,3, 4 with LED and electrical protection
1 = horizontal, width 5,08 mm
2 = vertical, width 5,08 mm

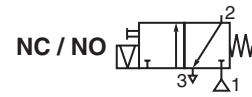
3 = horizontal, width 2,54 mm
4 = vertical, width 2,54 mm
5 = cable ends 0,5 m long, 0,25 mm²

00217GB-2017/R01
Availability, design and specifications are subject to change without notice. All rights reserved.



MICRO SOLENOID VALVES

direct operated, with latching coil
pad-mounting body
for subbase M3/M5



3/2
Series
188
Type
Micro 10

GENERAL

Fluid Air or inert gas, non-lubricated, filtered at 25 µm
Operating pressure 8 bar max.
Ambient temperature +5°C to +50°C
Flow (Qv at 6 bar) See «SPECIFICATIONS»
Manual operator Impulse-type (without manual operator on request)
Switching time 10 ms (<10 ms on request)

CONSTRUCTION

Body PA (polyamide) MXD6
Internal parts Stainless steel, nickel-plated steel, synthetic material, aluminium
Seals NBR (nitrile), FPM (fluoroelastomer) on request



ELECTRICAL CHARACTERISTICS

voltage (other voltages on request)	consumption	insulation class	degree of protection	electrical connection
24V = 12V = (+10%, -15%) 5V =	1W - 1,3W	F	IP 40	connector with two 0.5 mm ² lead wires + built-in LED and electrical protection or cable ends, 0,5 m long

The solenoid valves are designed for continuous operation within the maximum ambient temperature limits.

SPECIFICATIONS

symbol	orifice size (mm)		flow		operating pressure (bar)		consumption (W)	type of electrical connection (*)	catalogue number
	1 → 2	2 → 3	at 6 bar l/min (ANR)	coefficient Kv	min.	max.			
	0,5	0,7	8	0,12	0	7	1,3	1	18801101
								2	18801102
								3	18801103
								4	18801104
								5	18801105
	0,8	0,8	10	0,15	0	3	1,3	1	18801106
								2	18801107
								3	18801108
								4	18801109
								5	18801110
	1,0	1,0	12	0,18	0	1	1,3	1	18801111
								2	18801112
								3	18801113
								4	18801114
								5	18801115

(*) Type 1,2,3, 4 with LED and electrical protection

1 = horizontal, width 5,08 mm

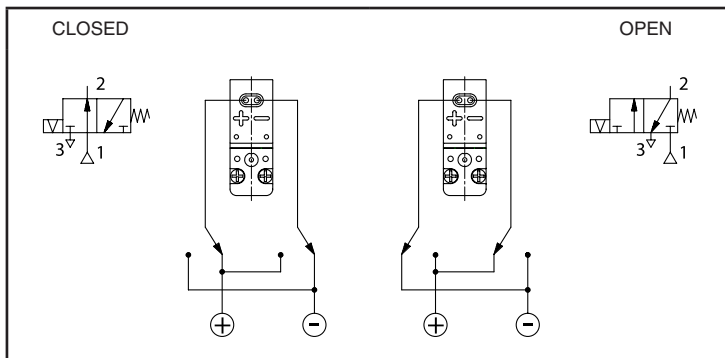
2 = vertical, width 5,08 mm

3 = horizontal, width 2,54 mm

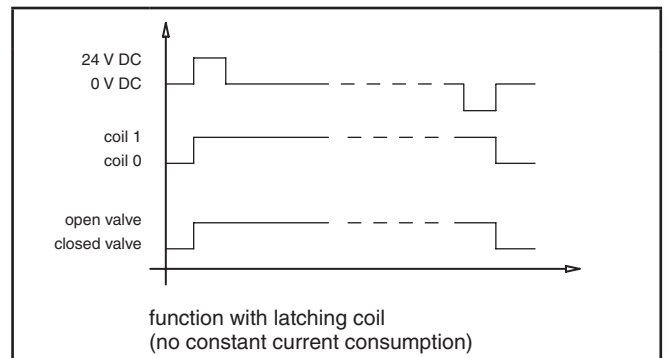
4 = vertical, width 2,54 mm

5 = cable ends 0,5 m long, 0,25 mm²

WIRING DIAGRAM



FUNCTIONAL DIAGRAM

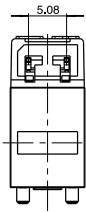
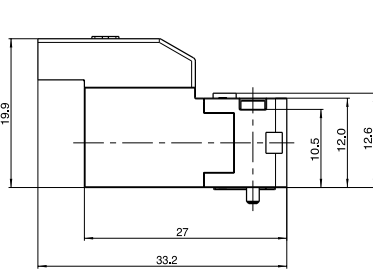


DIMENSIONS (mm), WEIGHT (kg)

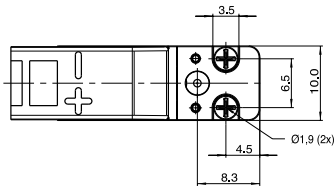


weight
0,0095

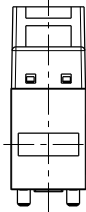
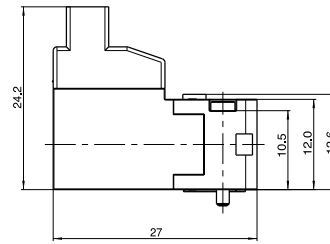
type 1



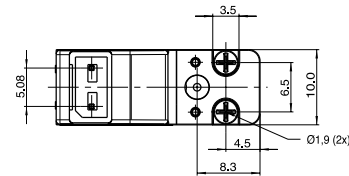
Scale 1



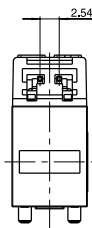
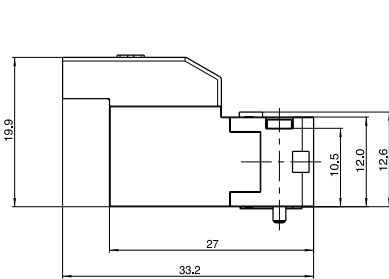
type 2



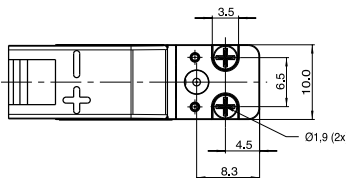
Scale 1



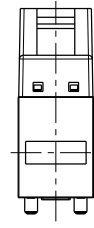
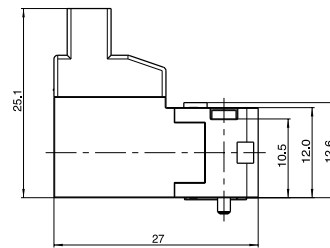
type 3



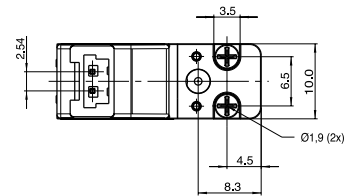
Scale 1



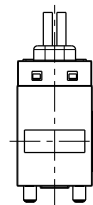
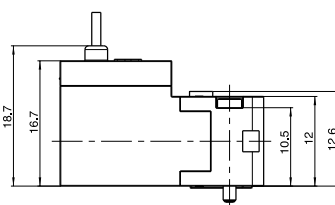
type 4



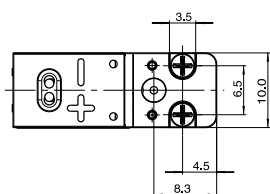
Scale 1



type 5



Scale 1



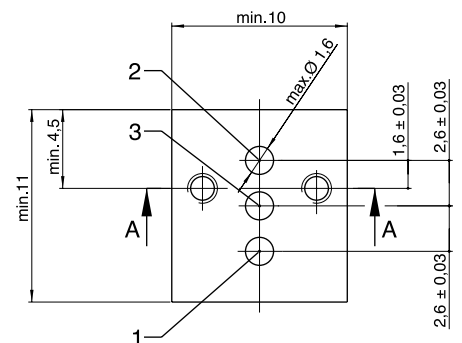
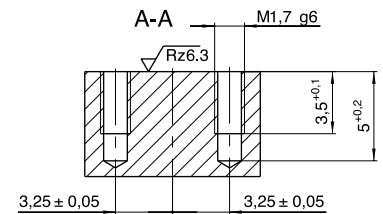
flange facing

NO
3 = Pressure
2 = Outlet
1 = Exhaust

NC
1 = Pressure
2 = Outlet
3 = Exhaust

Use in vacuum (NO)
3 = Vacuum pump
2 = Outlet
1 = Atmosphere

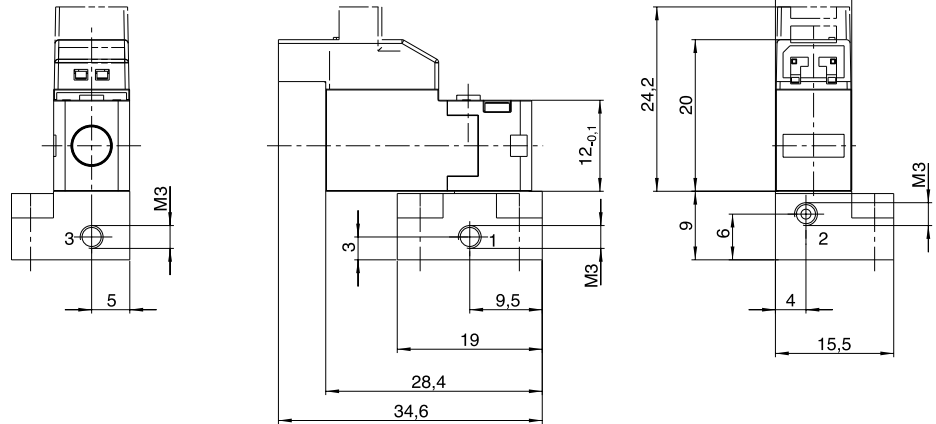
Use in vacuum (NC)
1 = Vacuum pump
2 = Outlet
3 = Atmosphere



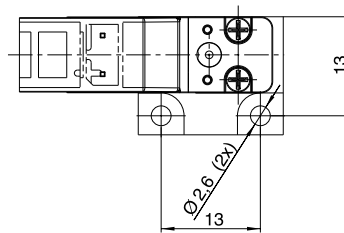
DIMENSIONS (mm), WEIGHT (kg)

solenoid valve mounted on single subbase

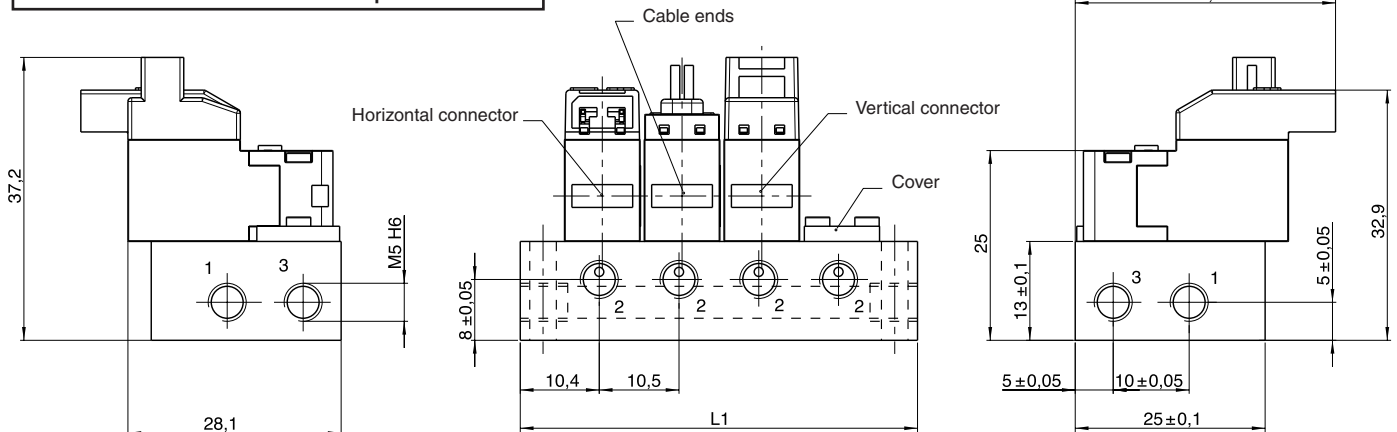
number of valves	subbase catalogue number*	weight
1	35300101	0,015



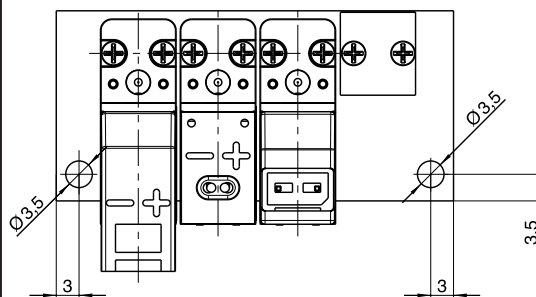
Scale 1



solenoid valve mounted on multiple subbase



number of valves	subbase catalogue number*	length		weight
		L1	L2	
2	35300102	33,5	27,5	0,051
3	35300103	44	38	0,069
4	35300104	54,5	48,5	0,086
5	35300105	65	59	0,104
6	35300106	75,5	69,5	0,122
7	35300107	86	80	0,139
8	35300108	96,5	90,5	0,156
9	35300109	107	101	0,175
10	35300110	117,5	111,5	0,193



Scale 1

A : Blanking plate, cat. no. **88135305**

* The connectors must be ordered separately, please indicate the quantity and one of the following codes:

Connector, 2 wires

Distance between contacts 5,08 mm - length 0,5 m

- length 1,5 m

- length 3 m

- catalogue number: **88118801**

- catalogue number: **88118802**

- catalogue number: **88118803**

Distance between contacts 2,54 mm - length 0,5 m

- length 1,5 m

- length 3 m

- catalogue number: **88118806**

- catalogue number: **88118807**

- catalogue number: **88118808**

