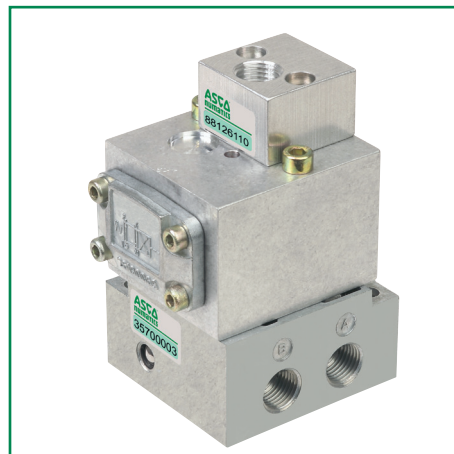


GENERAL

FLUID	: Air or neutral gas, filtered, lubricated or not
PRESSURE	: 2 to 12 bar
TEMPERATURE	: - 10°C, + 60°C
FLOW (Qv at 6 bar)	: see table below
PILOT PRESSURE	: the pilot pressure must be equal or superior to the pressure in the valve

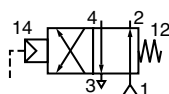
CONSTRUCTION

Body: light alloy
 Sealings: polyurethane (PUR) and nitrile (NBR)
 Mating surface to CNOMO 06-05-71/72 and AFNOR NF E49061/062
 Internal parts: steel, light alloy and acetal resin (POM)



SPECIFICATIONS

Pipe size	Orifice size (mm)	Flow		Fluid pressure (in bar)		Pilot pressure (in bar)		2 catalogue numbers	
		at 6 bar l/min (SRA)	KV coeff.	min.	max.	min.	max.	VALVE	AIR PILOT
G 1/4	8	700	10	2	12	2	12	26190069	88126110
G 3/8	12	1750	25	2	12	2	12	26290354	88126110



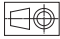
1 = P = Pressure
 2,4 = A,B = Outlet
 3 = E = Exhaust

SUBBASES

Valve mating surface	Type of subbase	DESIGNATION		catalogue number	Reference
		Pipe size	Type of port		
CNOMO 06.05.71 AFNOR E49061 G 1/4	SINGLE	G 1/4	side	35700003	P/DMP 401
	JOINABLE	G 1/4	side	35700008	PJ01/DMP 401
CNOMO 06.05.72 AFNOR E49062 G 3/8	SINGLE	G 3/8	side	35700004	P/DMP 402
	JOINABLE	G 3/8	bottom	35700011	PJ02/DMP 401- 402

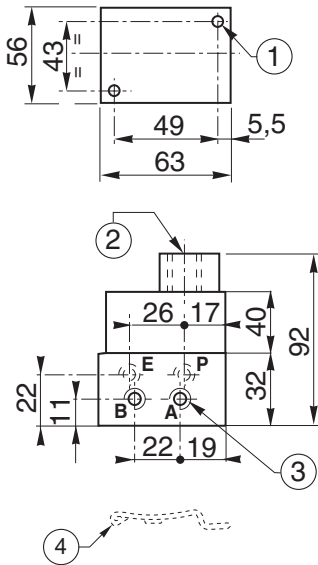
TO ORDER

The valve, air pilot unit and subbase must be ordered separately to be mounted by customer: please specify the quantity and code of each component required.

DIMENSIONS (mm), WEIGHT (kg) 

VALVE ON SINGLE SUBBASE

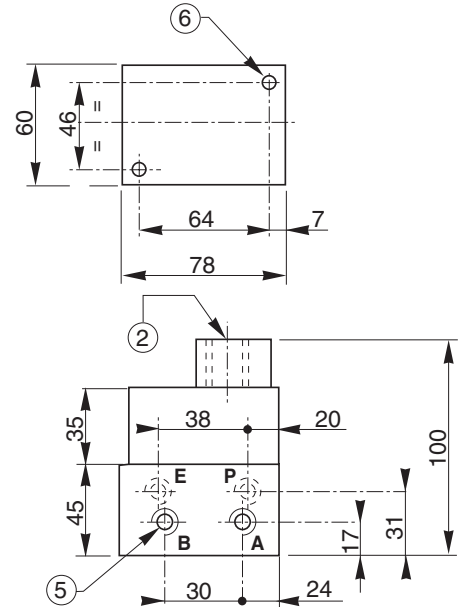
G 1/4 (series 261)
Subbase: catalogue number **35700003**
Weight: 0,550 kg



Ports
P : Pressure
A : Outlet
B : Outlet
E : Exhaust

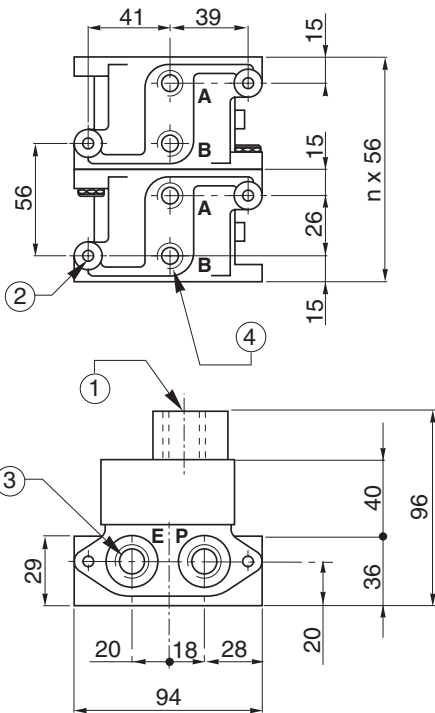
- ① 2 mounting holes \varnothing 5,5 mm (series 261)
- ② Pilot port: G 1/4
- ③ 4 ports: G 1/4
- ④ Clips
- ⑤ 4 ports: G 3/8
- ⑥ 2 mounting holes \varnothing 6,5 mm (series 262)

G 3/8 (series 262)
Subbase: catalogue number **35700004**
Weight: 0,850 kg



VALVE ON JOINABLE SUBBASE

G 1/4 (series 261)
Subbase: catalogue number **35700008**
Weight: 0,500 kg



n = number of subbases

- ① Pilot port : G 1/4
- ② 2 mounting holes \varnothing 7 mm
- ③ 2 ports : G 3/8
- ④ 2 ports : G 1/4
- ⑤ 2 ports : G 1/2

G 3/8 (series 262)
Subbase: catalogue number **35700011**
Weight: 0,750 kg

