

PULSE VALVES

dual stage, remote pilot
threaded body 1 1/2 to 3 or
compression fitting Ø 1 1/2

FEATURES

- The pulse valves are especially designed for dust collector service applications, combining high flow, long life and extremely fast opening and closing to produce reliable and economical operation
- The high flow, angle type bodies in combination with the special main diaphragm assemblies give the unique operating features required for dust collector service applications
- Integral compression fittings for fast, easy, secure installation
- Valves can be supplied according to ATEX Directive 2014/34/EU for non-electrical equipment
- The components satisfy all relevant EC directives

GENERAL

Differential pressure (PS) 0,35 - 8,5 bar [1 bar = 100kPa]
Ambient temperature range -20 to +85°C

| fluids | temperature range (TS) | diaphragm |
|--------|------------------------|-----------------------|
| air | -20 to +85 °C | CR (chloroprene) |
| | -20 to +120 °C | FPM (fluoroelastomer) |

CONSTRUCTION

Body Aluminium
Springs Stainless steel
Diaphragms CR or FPM

PILOT SOLENOID VALVES (2/2 NC function)

| main pulse valves | remote pilot connection | recommended executions | | |
|----------------------------------|-------------------------|------------------------|---|----------------------------|
| | | orifice size (mm) | manifold pilot valves in a box (IP65) | single pilot valves (IP20) |
| G353A046 G353A063 | G1/8 | 3,6 | pilot box series 110 2 to 12 valves 1/8 | series 257 |
| G353A048 G353A049 G353.058 | G1/4 | 5,6 | pilot box series C20 4 to 6 valves 1/4 | series 262 |

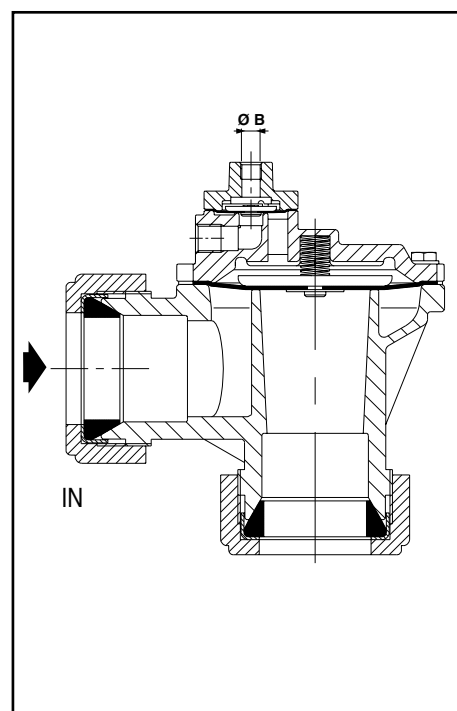


Figure shows catalogue number G353A046

SPECIFICATIONS

| pipe size | orifice size | flow coefficient Kv | | operating pressure differential (bar) | | catalogue number | | OPTION FPM |
|--|--------------|---------------------|---------|---------------------------------------|--------------|--------------------------------|-----------------------------------|------------|
| | | | | min. | max. (PS) | | | |
| | | | | | air ~ / = | | | |
| | (mm) | (m³/h) | (l/min) | | | standard | ATEX II2G/D | |
| G - Threaded pipe connection | | | | | | | | |
| 1 1/2 | 50 | 46 | 768 | 0,35 | 8,5 | G353A046 ⁽¹⁾ | G353A046 GD ⁽¹⁾ | V |
| 2 | 66 | 77 | 1290 | 0,35 | 8,5 | G353A048 ⁽²⁾ | G353A048 GD ⁽²⁾ | V |
| 2 1/2 | 66 | 92 | 1540 | 0,35 | 8,5 | G353A049 ⁽²⁾ | G353A049 GD ⁽²⁾ | V |
| Ø - Compression fitting pipe connection | | | | | | | | |
| 1 1/2 | 50 | 43 | 717 | 0,35 | 8,5 | G353A063 ⁽¹⁾ | G353A063 GD ⁽¹⁾ | V |

⁽¹⁾ Contains spring above the main diaphragm

⁽²⁾ Spring above the main diaphragm on request

OPTIONS

- Valves can also be supplied with FPM (fluorelastomer) diaphragms and seal materials. Use the appropriate optional suffix letter for identification
- Sequential controller for pilot solenoid valves
- Pilot boxes containing 2 to 12 pilot solenoid valves
- Pilot solenoid valves can be equipped with explosionproof solenoids for hazardous locations according to "ATEX" and national standards

INSTALLATION

- The valves can be mounted in any position without affecting operation (if ⁽¹⁾ + ⁽²⁾ catalogue number)
- Threaded pipe connection is: G = G (ISO 228/1) or compression fittings
- When connecting piping or tubing to the G1/8 or G1/4 connection in the valve bonnet, the remote ASCO pilot valve should be mounted as close as possible to the main pulse valve. Connection tubing lengths of 3 meter or less have little effect on the pulse response. Installations with over 3 meter of tubing must be tested under actual operating conditions. Tubing with Ø 6 or Ø 8 mm O.D. is recommended for all installations
- For compression fitting types tightness is achieved by the compressed gasket on the blow tube
- Other pipe threads are available on request
- Installation/maintenance instructions are included with each valve

SPARE PARTS KITS

| catalogue number | Spare parts kit no. |
|-------------------|---------------------|
| | ~/= |
| G353A046/063 (GD) | C113826 |
| G353A048/049 (GD) | C113684 |

DIMENSIONS (mm), WEIGHT (kg)

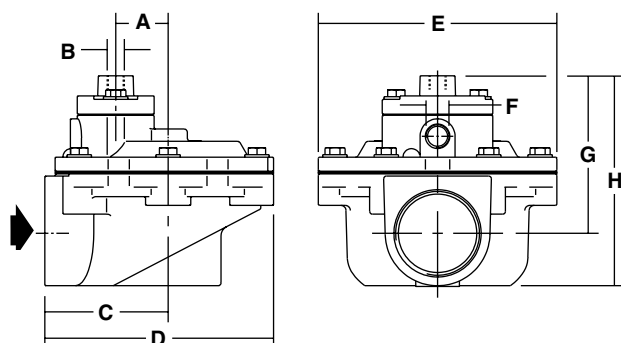


Fig.1 Threaded type

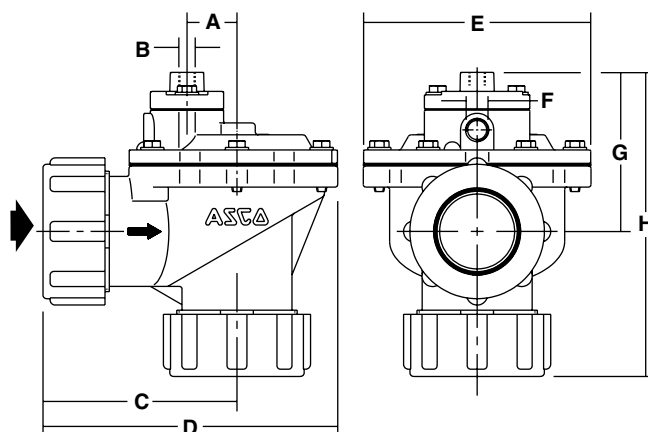


Fig.2 Compression fitting type

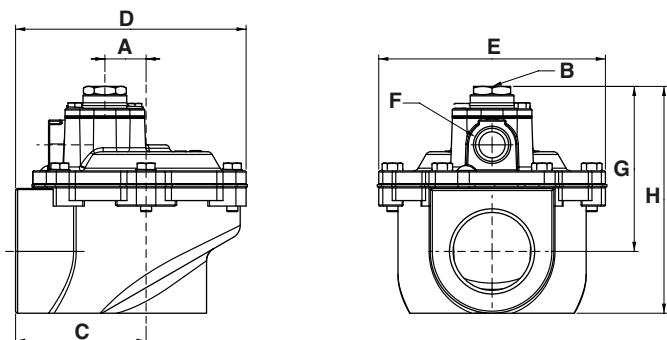


Fig. 3 Threaded type

| catalogue number | A | B | C | D | E | F | G | H | weight | (C) |
|------------------|----|--------|----|-----|-----|--------|-----|-----|--------|-------|
| G353A046 (GD) | 30 | G 1/8" | 71 | 130 | 136 | G 3/8" | 90 | 120 | 1,10 | Abb.1 |
| G353A048 (GD) | 30 | G 1/4" | 95 | 168 | 165 | G 3/4" | 121 | 166 | 2,60 | Abb.3 |
| G353A049 (GD) | 30 | G 1/4" | 95 | 168 | 165 | G 3/4" | 121 | 166 | 2,30 | Abb.3 |
| G353A063 (GD) | 30 | G 1/8" | 87 | 177 | 136 | G 3/8" | 96 | 183 | 1,43 | Abb.2 |

(C) construction type

All leaflets are available on: www.asco.com