

# Solenoid Valves

Pilot Operated, 316 Stainless Steel Body & Flange  
DN15 – DN50

Series  
210

## Features

- 2 way on-off valves for the control air, inert gas, water, oil and other gases/liquids compatible with the sealing material used
- 316SS body for corrosive environment
- 316SS DIN EN 1092-1 (ISO 7005) or ANSI B16.5(Class 150LB) flange
- Explosion proof option

## General

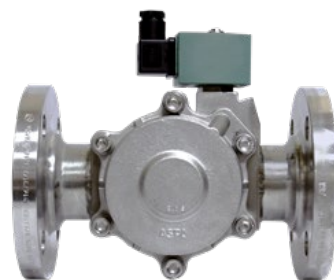
**Fluids(\*):** Air, Inert Gas, Water, Oil

**Maximum Viscosity:** 65 cSt (mm<sup>2</sup>/s)

**Response Time:** 40 - 120 ms (1" to 2")

**Temperature range (TS):** -20°C to +85°C

\* Ensure that compatibility of materials in contact with fluids is verified



## Construction

### Stainless steel body

**Body:** SS 316

**Seals, Diaphragm and Disc:** NBR

**Piston:** Stainless steel

**Core tube:** Stainless steel

**Core and Plugnut:** Stainless steel

**Springs:** Stainless steel

**Seat:** Stainless steel

**Shading coil:** Silver

**Flange:** DIN EN 1092-1 (ISO 7005) or ANSI B16.5(Class 150LB)

## Electrical characteristic

**Standard Voltage(\*):** DC(=): 12V; 24V; 48V  
AC(~): 24V/50Hz; 48V/50Hz; 110V/50 Hz;  
120V/60 Hz; 230V/50 Hz; 240V/60 Hz

\* Other voltages available when required.

# Solenoid Valves

Pilot Operated, 316 Stainless Steel Body & Flange  
DN15 – DN50

Series  
210

## Specifications

Pipe Size	Orifice Size	Flow Coefficient - Kv	Operating Pressure Differential(bar)								Coil & Enclosure Option			Power Coil (W)		Catalog Number	Option			TPL		Dimensions/ Type
			Max. (PS)						316SS Body and DIN EN 1092-1(ISO 7005) Flange with High Power Rating	316SS Body and ANSI B16.5 (Class 150LB) Flange with High Power Rating												
	Min.	Air*		Water*		Oil*		FPM			EPDM	Manual Operator (MO)										
		(mm)	(m³/h)	~	=	~	=		~	=			~	=								
NC - Normally Closed																						
DN15	16	3.4	0	16	16	16	16	16	-	●	●	●	16.7	16.8	SCXE210C487	V	E	●	●	01		
DN20	16	3.9	0	16	16	16	16	16	-	●	●	●	16.7	16.8	SCXE210C488	V	E	●	●	02		
DN25	25	9.6	0	16	16	16	16	16	10	●	●	●	15.4	23	SCXE210D489	V	E	-	●	03		
DN40	32	19.3	0.35	12	12	12	12	12	12	●	●	●	16.7	19.7	SCXE210A127	V	E	●	●	04		
DN50	44	37	0.35	16	16	16	16	16	16	●	●	●	17.1	22.6	SCXE210A129	V	E	●	●	05		
NO - Normally Open																						
DN15	16	2.6	0	16	16	16	16	10	10	●	●	●	10.5	23	SCXE210B430	V	E	-	●	06		
DN20	16	2.6	0	16	16	16	16	10	10	●	●	●	10.5	23	SCXE210B438	V	E	-	●	07		
DN40	32	19.3	0.35	9	9	9	9	9	9	●	●	●	15.4	16.8	SCXE210A132	V	E	-	●	08		
DN50	44	37	0.35	9	9	9	9	9	9	●	●	●	15.4	16.8	SCXE210A133	V	E	-	●	09		

(1) Need add suffix "CCC" when selling to China, Suffix "CIN" for INMETRO certification

(2) TPL 24085: 316SS Body and DIN EN 1092-1 (ISO 7005) Flange with High Power Rating

(3) TPL 24086: 316SS Body and ANSI B16.5 (Class 150LB) Flange with High Power Rating

(4) 16 bar for SC only, 12 bar for NF/WSNF/WS/WP enclosure

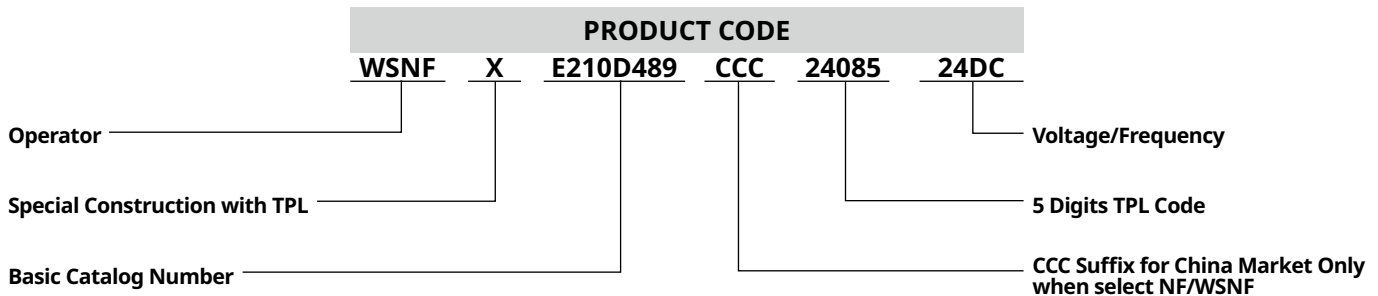
● Available

\* Ensure the compatibility of materials in contact with fluid is verified.

# Contact Emerson for details.

## Ordering Information

A valve supplied with the explosion proof operator will be identified with prefix "NF" or "WSNF" before the catalogue number.



## Installation

- Installation/Maintenance instructions are included with each valve
- The solenoid valves can be mounted in any position without affecting operation
- The operator can be rotated 360 degrees to select the most favorable position for cable entry

## Spare Part Kits

Basic Codes	Spare parts kits	
	AC	DC
SCE210C487/C488	C302328	C326548
SCE210D489	C302329	C326549
SCE210A127	C325260	C325261
SCE210A129	C325262	C325263
SCE210B430/B438	C326553	C326550
SCE210A132	C325266	C325267
SCE210A133	C325268	C325269

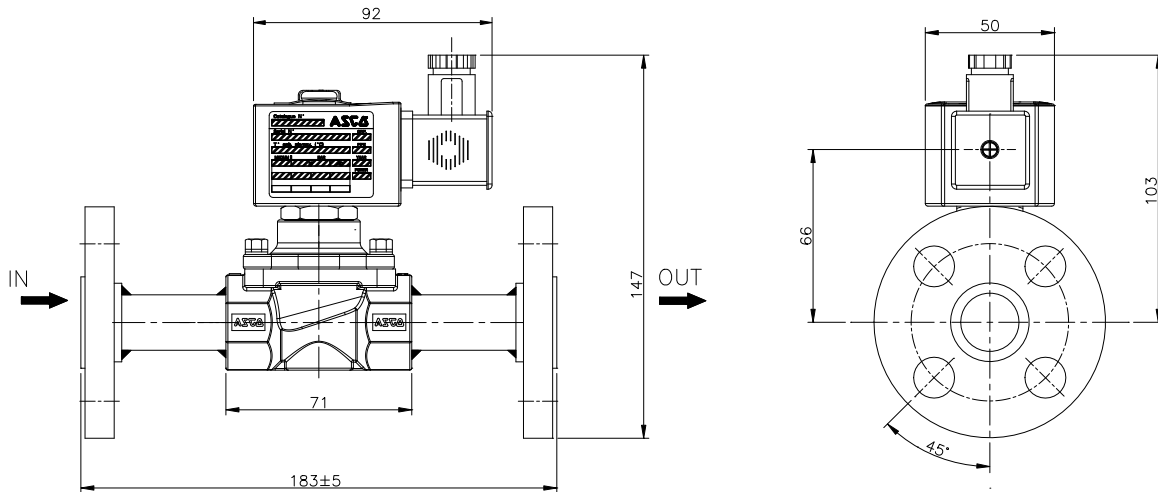
# Solenoid Valves

Pilot Operated, 316 Stainless Steel Body & Flange  
DN15 – DN50

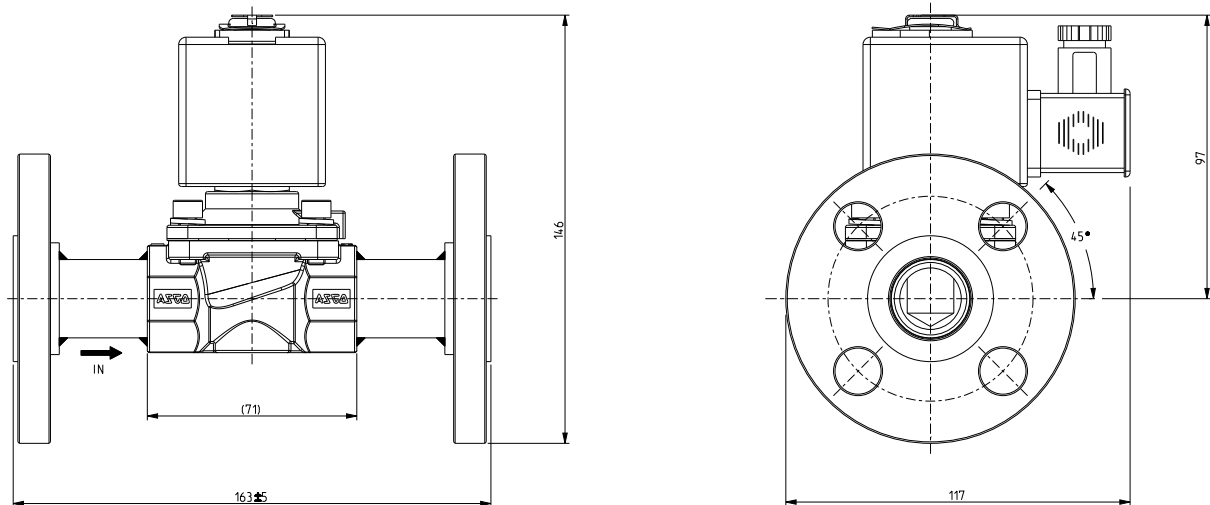
Series  
210

Dimensions: mm

Type 1



Type 2



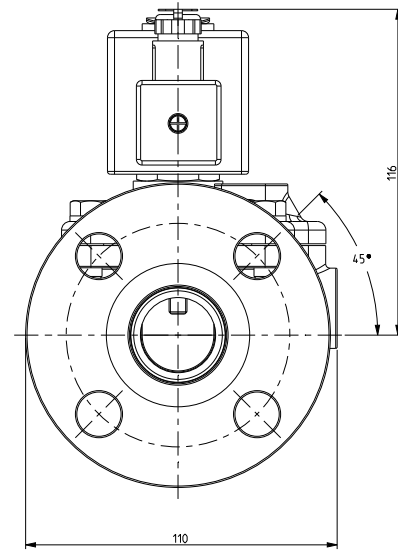
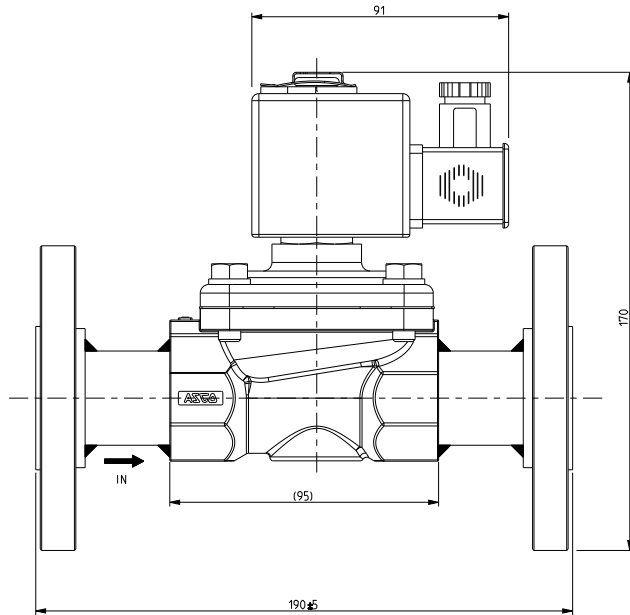
# Solenoid Valves

Pilot Operated, 316 Stainless Steel Body & Flange  
DN15 – DN50

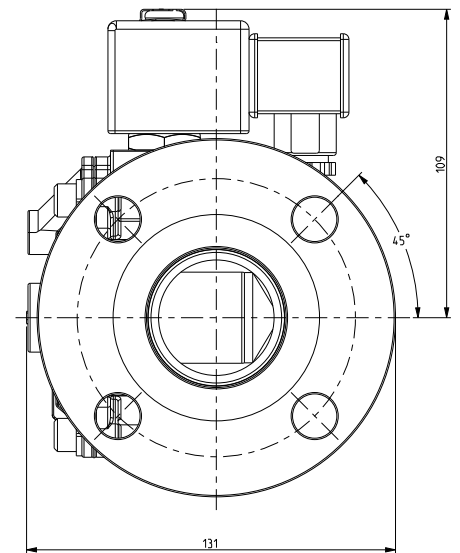
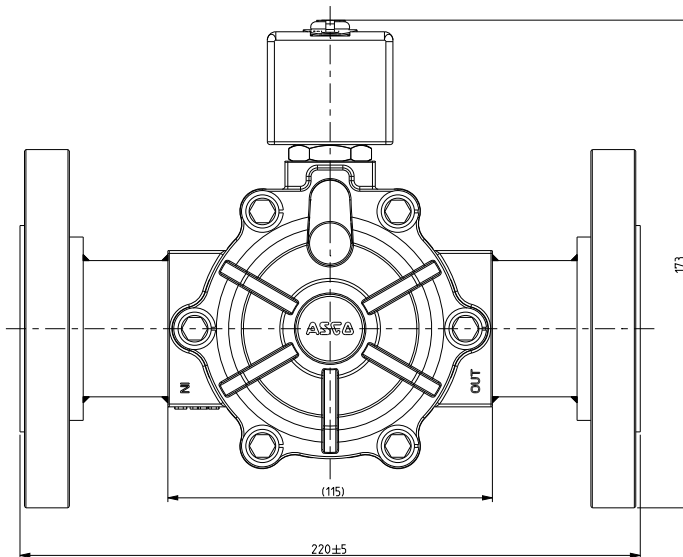
Series  
210

## Dimensions: mm

Type 3



Type 4



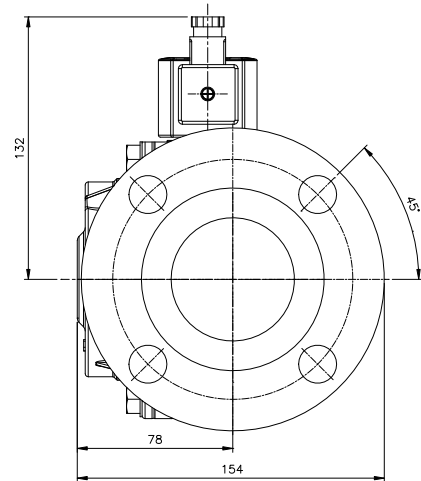
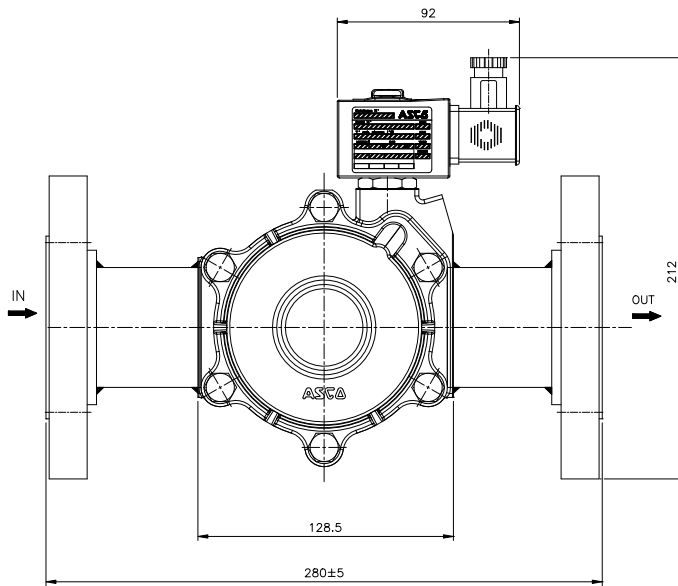
# Solenoid Valves

Pilot Operated, 316 Stainless Steel Body & Flange  
DN15 – DN50

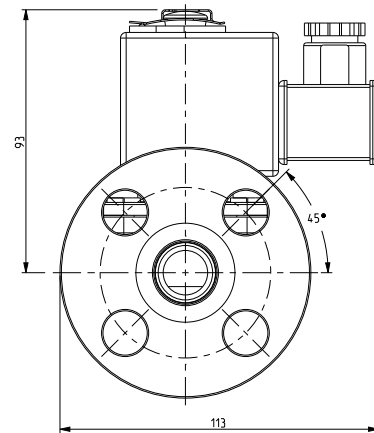
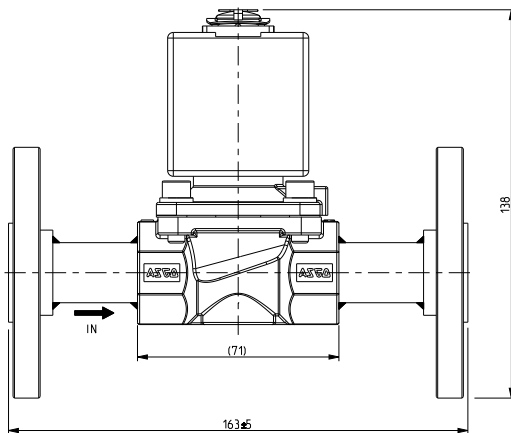
Series  
210

Dimensions: mm

Type 5



Type 6



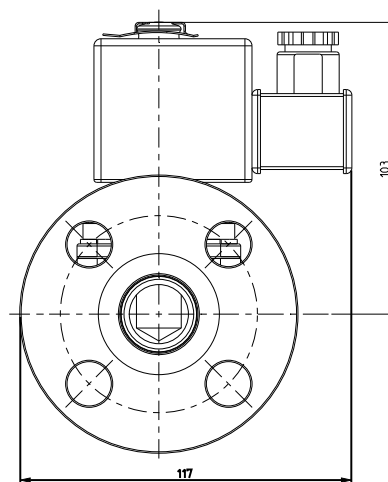
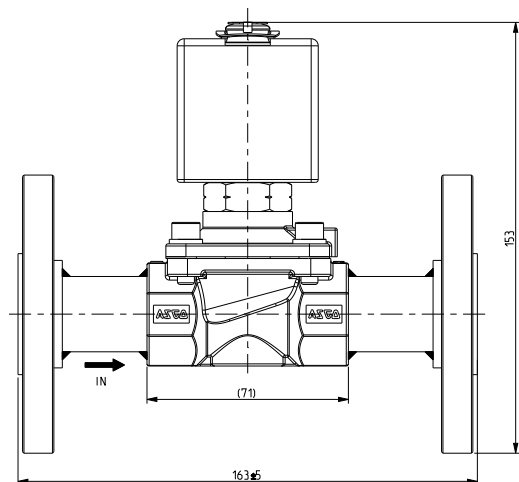
# Solenoid Valves

Pilot Operated, 316 Stainless Steel Body & Flange  
DN15 – DN50

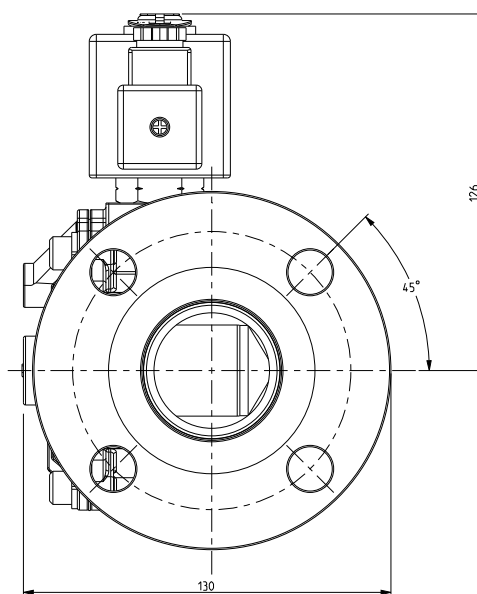
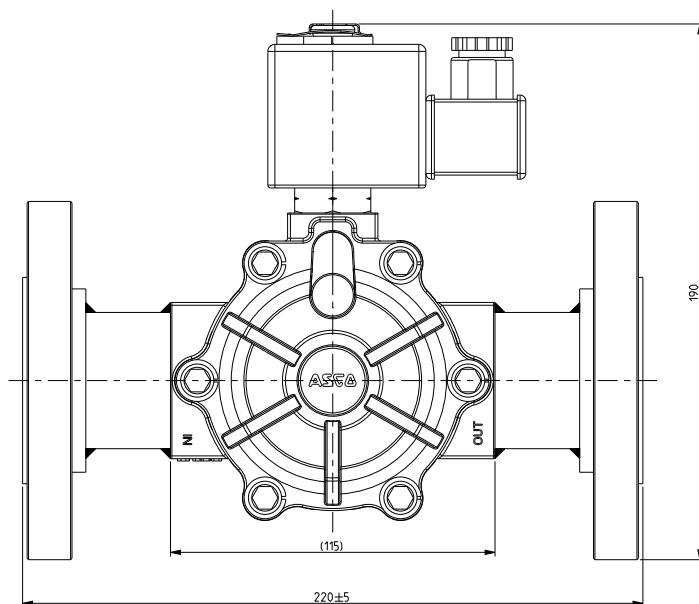
Series  
210

Dimensions: mm

## Type 7



## Type 8



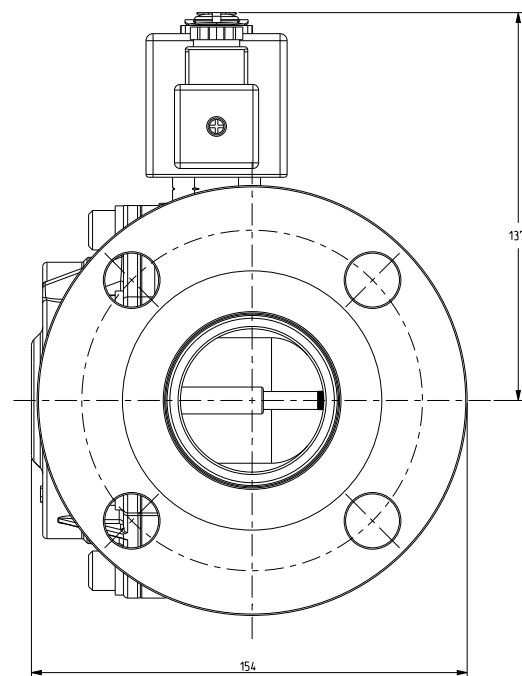
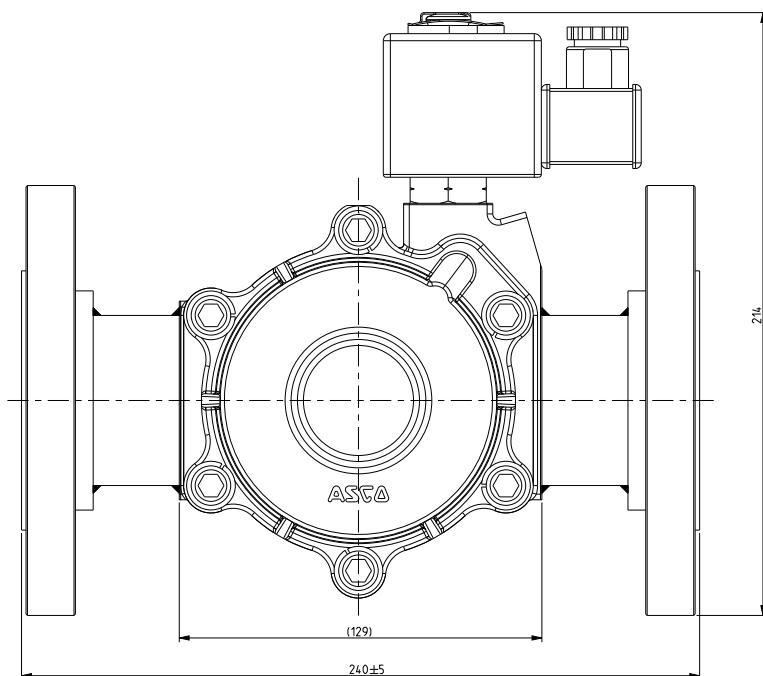
# Solenoid Valves

Pilot Operated, 316 Stainless Steel Body & Flange  
DN15 – DN50

Series  
210

## Dimensions: mm

### Type 9



TR000640ENUS-04\_06-25  
Availability, design and specifications are subject to change without notice.  
© 2025 Emerson Electric Co. All rights reserved.