

Features

- The Piston Type pulse valves are specially designed for Dust Collector Service applications, combining high flow, long life and extremely fast opening to produce reliable and economical operation.
- This is Direct Mount High flow, Spring less construction with a Special Piston form assembly that gives a unique operating feature required for dust collector service applications.
- Various Solenoid Enclosure Options available. Weatherproof option for IP67 application and Explosion proof for use in potentially explosive atmospheres (gas & dust) according to directive ATEX 94/9/EC and CCC.
- Easy installation directly into header tank.
- Higher harsh environment resistance & better appearance.



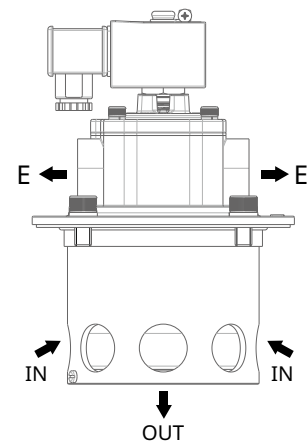
General Valve Information

Differential pressure 1.5~6 bar [1 bar = 100kPa]

Fluids	Temperature Range	Diaphragm	Piston
Air	-20°C ~ +85°C	TPE (Hytrel)	Nylon 66

Materials in Contact with Fluid

Body	Aluminum
Cylinder	Aluminum Black anodized
Core tube	Stainless steel
Core and plugnut	Stainless steel
Springs	Stainless steel
Seals & disc	NBR (Nitrile / Buna-N)
Diaphragm	TPE (Hytrel)
Piston	Nylon 66
Shading coil	Copper
Coil insulation class	F & H
Connector	Spade plug
Connector specification	ISO4400
Electrical safety	IEC335



Electrical Characteristics

Enclosure	Coil	AC (~)			DC(=)
		Inrush(~) (VA)	Holding(~) (VA)	Wattage (W)	Wattage (W)
NF	EST-MXX	55	23	10.5	19.7
WP	EST-MXX	55	23	10.5	19.7
SC	MXX	50	25	10.1	11.6

Temperature Range

Enclosure	Coil	Insulation Class	Operator AC/DC Min. Ambient Temp. °C	Operator AC(~) Max. Ambient Temp. °C					Operator DC(=) Max. Ambient Temp. °C					PV-Ambient Temperature Range	
				Surface Temperature			IP65	IP67	Surface Temperature			IP65	IP67	Min. Temp	Max. Temp
				T6 - IP66/ IP67	T5 - IP66/ IP67	T4 - IP66/ IP67			T6 - IP66/ IP67	T5 - IP66/ IP67	T4 - IP66/ IP67				
				85°C	100°C	135°C			85°C	100°C	135°C				
NF	EST-MXX	F (155°C)	-60°	+40°C	+60°C	+75°C	-	-	+25°C	+40°C	+60°C	-	-	-20°C	+85°C
		H (180°C)		+40°C	+60°C	+100°C	-	-	+40°C	+60°C	+75°C	-	-		
WP	EST-MXX	F (155°C)	-40°	-	-	-	-	+75°C	-	-	-	-	+25°C		
		H (180°C)		-	-	-	-	+100°C	-	-	-	-	+50°C		
SC	MXX	F (155°C)	-20°	-	-	-	+85°C	+85°C	-	-	-	+85°C	+85°C		
		H (180°C)		-	-	-			-	-	-				

Valve temperature range:

The valve temperature range is determined by the selected seal material, the temperature range for proper operation of the valve and sometimes by the fluid (e.g. steam).

Operator ambient temperature range:

The operator ambient temperature range is determined by the selected power level and the safety code.

Total temperature range:

The temperature range of the complete solenoid valve is determined by the limitations of both temperature ranges above.

Specifications

Pipe Size	Orifice Size	Flow Coefficient Kv		Operating pressure differential (bar)		Conduit Size	LED	Surge Suppressor	Power Coil (W)		Enclosure	Catalog number	Type
		(m³/h)	(l/min)	Min.	Max.				AC	DC			
3	79	380	6300	1.5	6	1/2" NPT			10.5	-	WP	X353538217x07xx	1
						1/2" NPT			-	19.7		X353538217x08xx	
						M20 x 1.5			10.5	-		X353538217x09xx	
						M20 x 1.5			-	19.7		X353538217x10xx	
						1/2" NPT		•	-	19.7		X353538217x11xx	
						M20 x 1.5		•	-	19.7		X353538217x12xx	
						-			10.1	-	SC	X353538217x13xx	2
						-			-	11.6		X353538217x14xx	
						-	•		10.1	-		X353538217x15xx	
						-	•		-	11.6		X353538217x16xx	
						1/2" NPT			10.5	-	NF	X353538217x17xx	3
						1/2" NPT			-	19.7		X353538217x18xx	
						M20 x 1.5			10.5	-		X353538217x19xx	
						M20 x 1.5			-	19.7		X353538217x20xx	
						1/2" NPT		•	-	19.7		X353538217x21xx	
						M20 x 1.5		•	-	19.7		X353538217x22xx	

How to Order

X353538217				X	13	XX
Option Codes:				Voltage Codes * :		
0 = General Purpose - IP65(for SC)				F1 = 24 DC		
1 = INMETRO(for NF)				F8 = 230/50 AC		
2 = KOSHA(for NF)				FE = 110/50 AC		
3 = CUTR(for NF)				FT = 115/50 AC		
4 = CCC(for NF)				H1 = 24 DC		
5 = PESO(for NF)				H8 = 230/50 AC		
6 = ATEX(for NF)				HE = 110/50 AC		
9 = TS(for NF)				HT = 115/50 AC		
B = General Purpose - IP67(for SC & WP)						
Y = Spare Kit						
Z = Rebuild Kit(Spare Kit + SBSA, only for SC & WP)						

* Other voltages & 60Hz on request

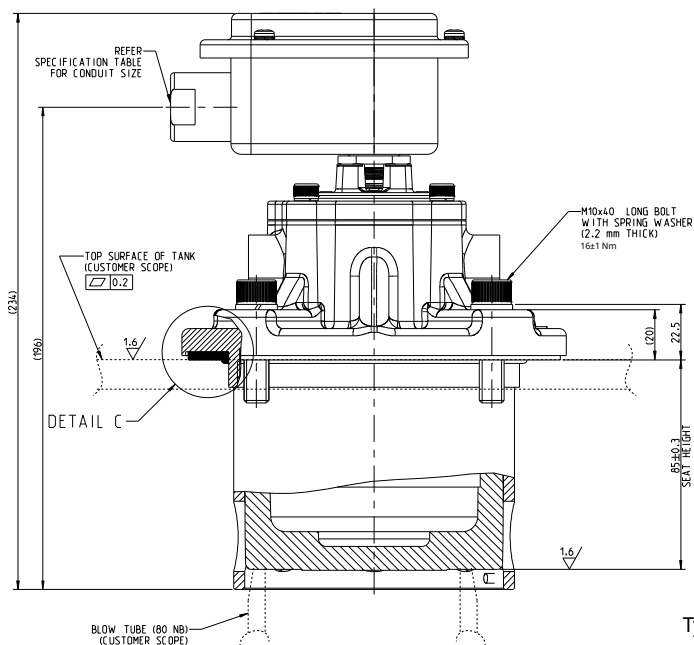
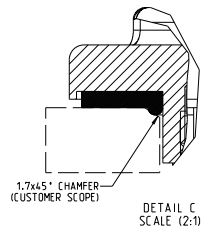
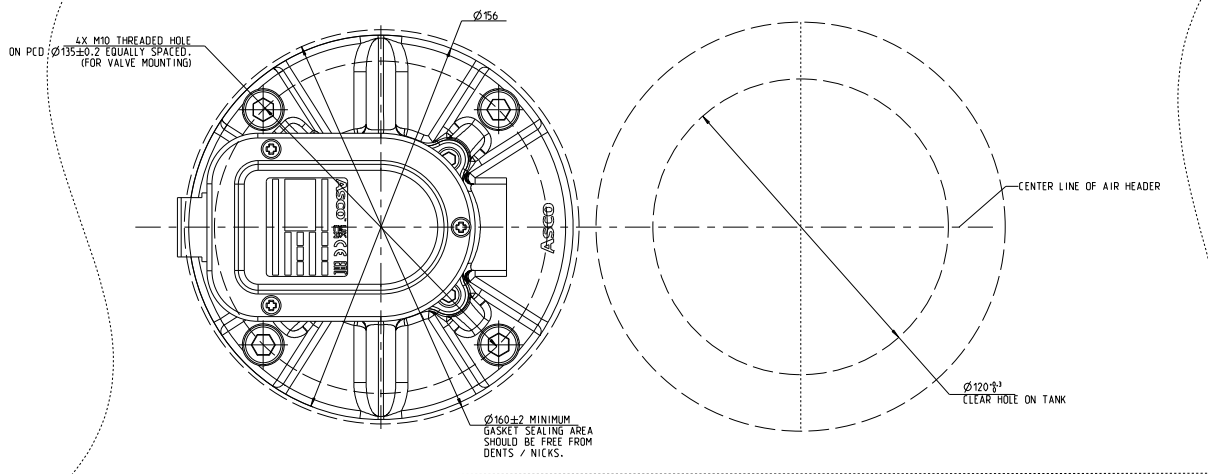
Installation

- The valves Must be mounted with solenoid vertical and upright position only.
- Pipe connection identifier is 3" TM (Tank Mounted).
- Installation/maintenance instruction are included with each valve.
- Spare Parts Kit and replacement Coils are available.

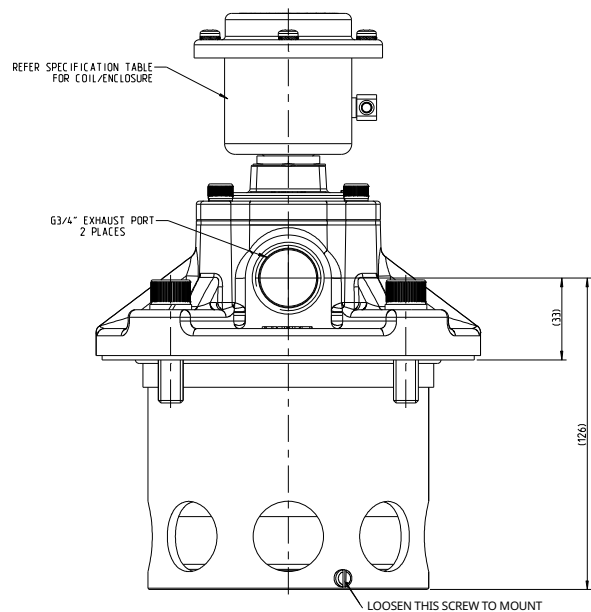
Dimensions: mm



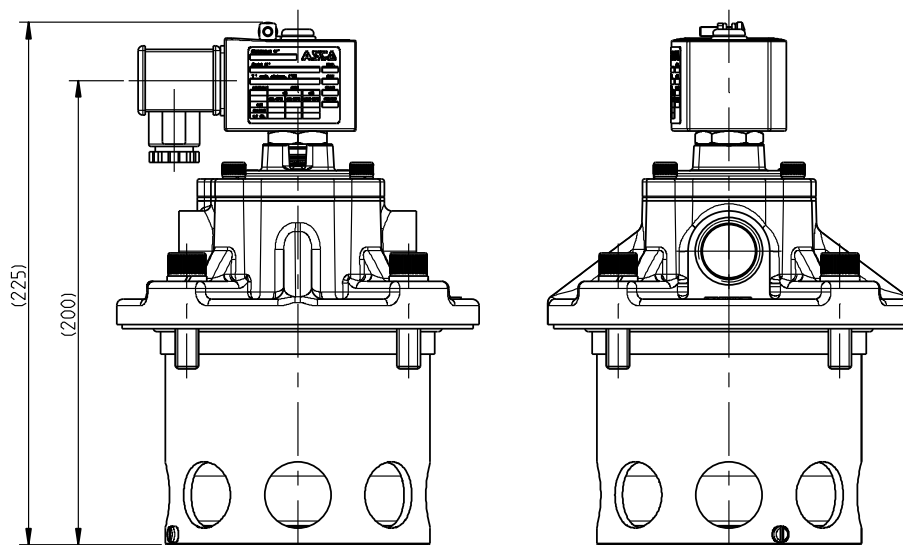
CUSTOMER TANK DIMENSIONAL DETAILS:



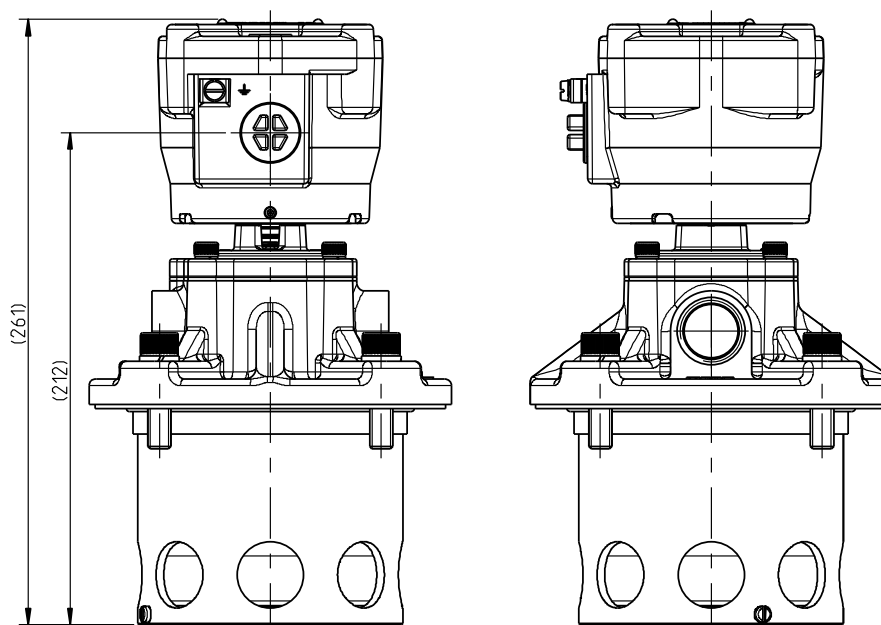
Type 1



Dimensions: mm



Type 2



Type 3